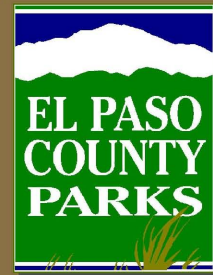


# Homestead Ranch Regional Park



Located at the edge of Black Forest, this 450-acre regional park has diverse topography ranging from rolling, open meadows to tree-covered bluffs running the length of the park. A natural spring-fed pond and creek in the central valley of the park attracts deer, coyotes, foxes, fishing and over 35 types of waterfowl and birds. The park includes a playground, picnic pavilions, and playfield. Equestrian riders can water their horses at the trough while enjoying over four miles of trails throughout the park.

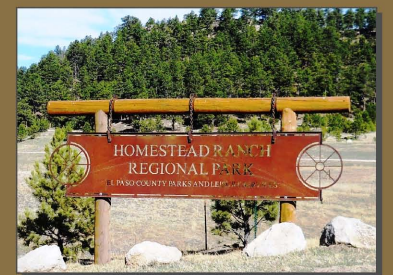
### Location & Hours of Operation

16444 Gollihar Road  
Peyton, CO 80831

Park Hours:  
5 a.m. to 11 p.m.  
Reservation Season  
April – October  
Call (719) 520-7529

**Driving Directions:**  
Homestead Ranch Regional Park can be reached from Interstate 25, Exit 139 (Hwy 24) or Exit 149 (Woodmen Road).

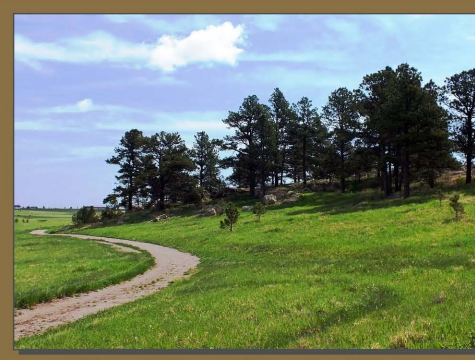
From Woodmen turn Left onto US-24 to Bradshaw Road; left on Bradshaw to Sweet Road; left on Sweet Road to Gollihar Road; right on Gollihar Road, and the park will be approximately 1/2-mile north to Park Entrance.



Wonderful Views of the Front Range



Playground and Picnic Area



Hiking, Biking, & Horseback Trails