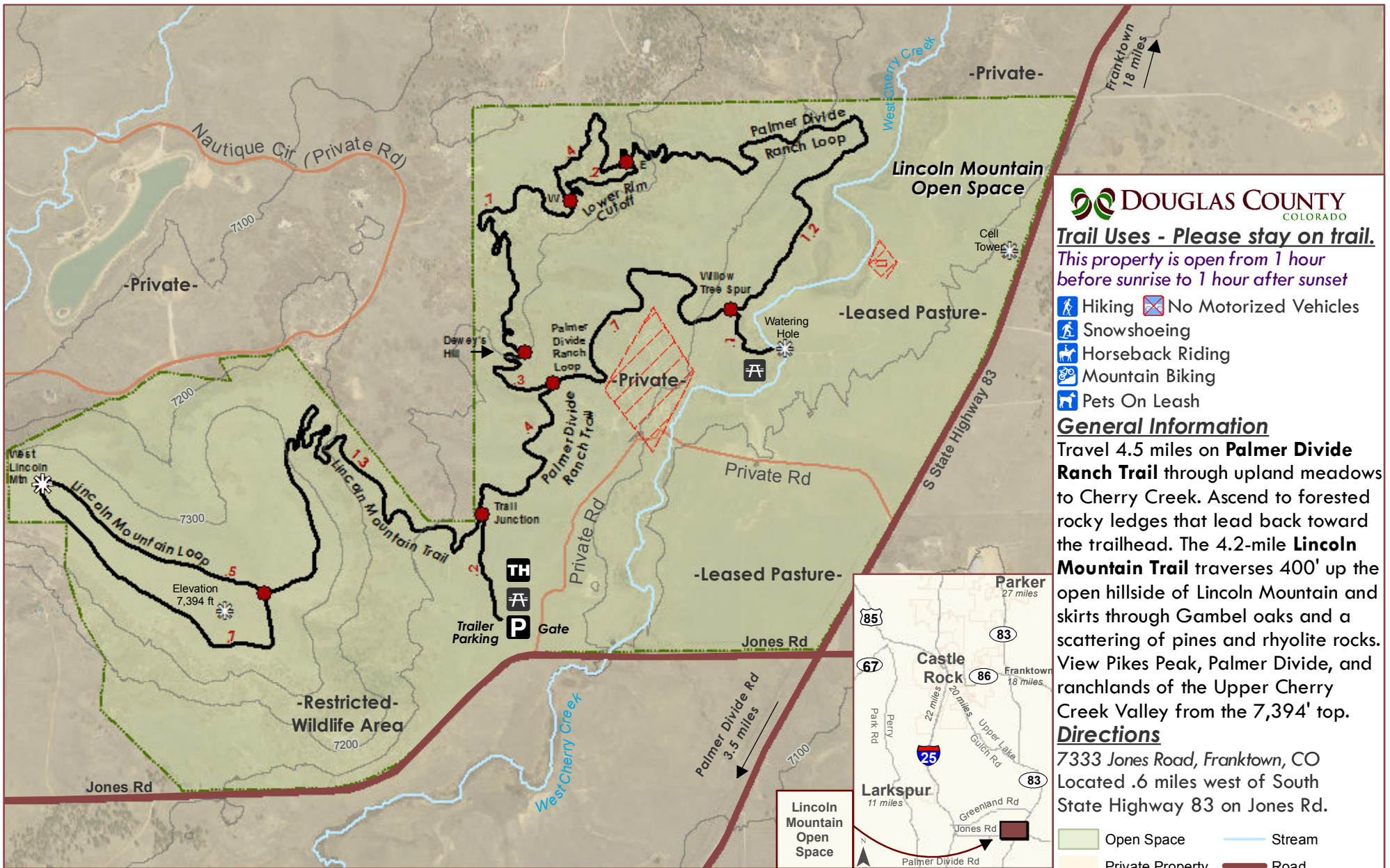


Lincoln Mountain Open Space Trail



Trail Uses - Please stay on trail.

This property is open from 1 hour before sunrise to 1 hour after sunset

- Hiking
- No Motorized Vehicles
- Snowshoeing
- Horseback Riding
- Mountain Biking
- Pets On Leash

General Information

Travel 4.5 miles on **Palmer Divide Ranch Trail** through upland meadows to Cherry Creek. Ascend to forested rocky ledges that lead back toward the trailhead. The 4.2-mile **Lincoln Mountain Trail** traverses 400' up the open hillside of Lincoln Mountain and skirts through Gambel oaks and a scattering of pines and rhyolite rocks. View Pikes Peak, Palmer Divide, and ranchlands of the Upper Cherry Creek Valley from the 7,394' top.

Directions

7333 Jones Road, Franktown, CO
 Located .6 miles west of South State Highway 83 on Jones Rd.



- | | |
|------------------|-------------------|
| Open Space | Stream |
| Private Property | Road |
| Private | Private Road |
| Trail | Sign Post |
| 100 Foot Contour | Point of Interest |

