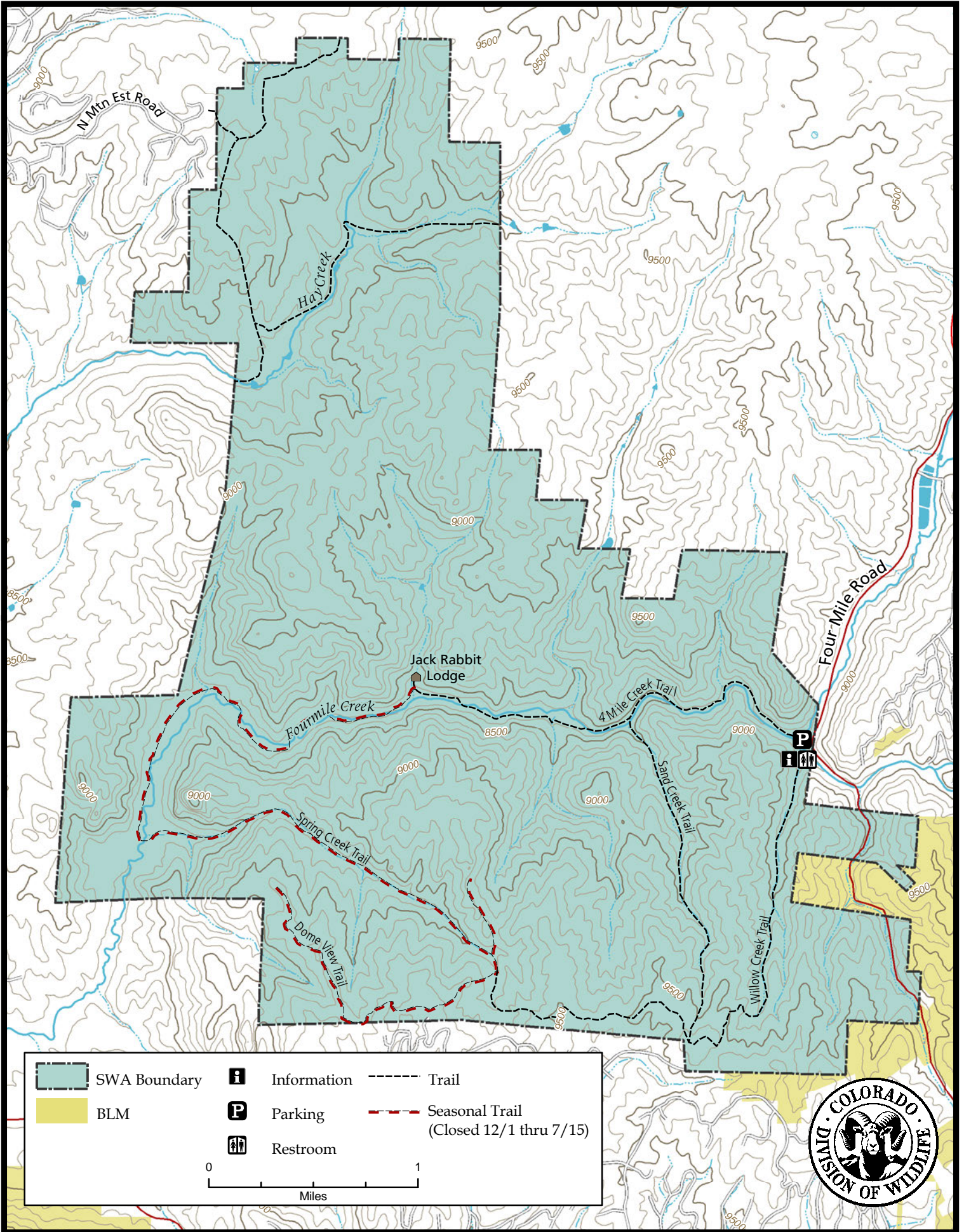
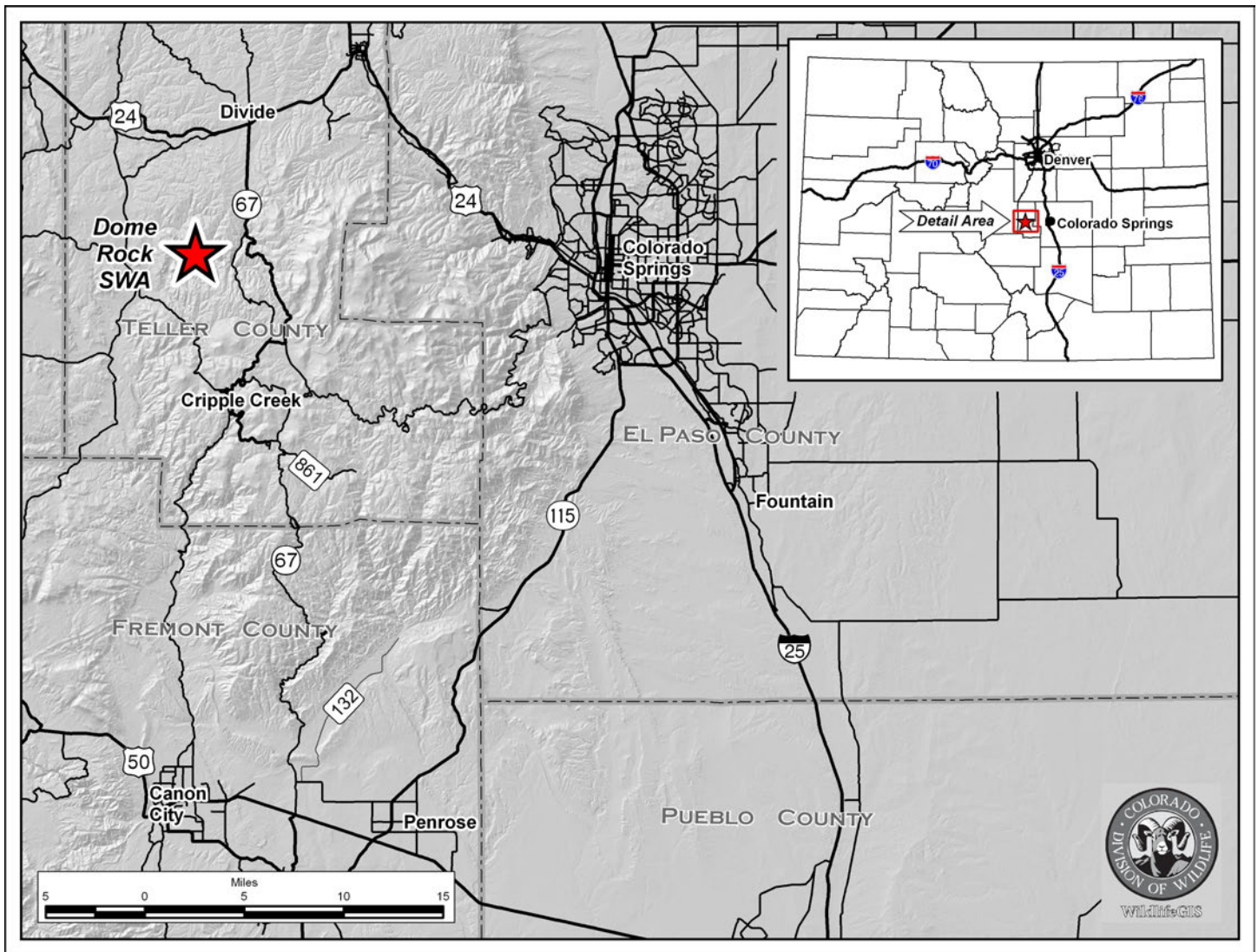


Dome Rock State Wildlife Area





Dome Rock SWA - Teller County

From Divide, go 5 miles south on Highway 67 to County Road 61 (Rainbow Valley Road), then 2 miles to the parking lot on the right.

Area Offers:

Hunting: Deer, Elk, Rabbit, Dusky (blue) Grouse.

Fishing: Coldwater Stream

Recreation: Wildlife Viewing, Hiking

Restrictions:

- A. Day use only; Camping is prohibited.
- B. Dogs are prohibited.
- C. Fires are prohibited.
- D. Rock climbing is prohibited
- E. Horseback, pack animals allowed only on designated roads and trails except if used as a big game hunting aid.
- F. Public access is prohibited from December 1 to July 15 on Spring Creek and Dome View trails, and Dome Rock Trail from Jackrabbit Lodge.
- G. Public access is restricted to foot or horseback only from designated parking lots and connecting trails from Mueller State Park.
- H. No mountain bikes.

In addition to or in place of those restrictions listed in regulation #900 the above listed provisions or restrictions apply (see Chapter 9, <http://wildlife.state.co.us/RulesRegs/Regulations/>).

This product is produced and distributed by: Colorado Division of Wildlife - GIS Group, 317 W. Prospect, Fort Collins, CO 80526. Information depicted hereon is for reference purposes only and is compiled from best available sources. Mapped property boundaries may or may not reflect actual legal holdings. Please observe and respect all marked boundaries and signs on the property. Regulations are subject to change - posted regulations at the individual SWA take precedence over any regulations referred to here. For further information, please see regulations brochures available at CDOW offices or wildlife.state.co.us.